



TOGETHER



**GUSTAVE /
ROUSSY**
CANCER CAMPUS
GRAND PARIS

| **TOGETHER** |
to cure cancer in the 21st century



**As France and Europe's leading cancer centre
and the world's third largest*,
Gustave Roussy cares for adults
and children with all types of cancer,
rare or common, at all stages of the disease.**



The Institute's medical and research teams work hard every day to carry out this mission with humanity and expertise. Combining prevention, care, research, and education, Gustave Roussy is rooted in continuous innovation to benefit patients.

TOGETHER



100,000
outpatient
stays

50,000
patients seen in consultation
and/or hospitalisation including
13,000
new patients

16,200
inpatient
stays in full
hospitalisation

3,200
employees
(FTE)



480 M €
of global
budget

10
joint research
units

96
families
of patent

472 **and** 135
beds places

1,150
caregivers

• Villejuif site :
398 beds and 106 day hospital places
• Chevilly-Larue site :
74 beds and 29 day hospital places

620
doctors

164
international
publications in journals
with impact factor > 30
(excluding conferences)

1,150
research
staff

10
doctor-researchers
in the Highly cited
researchers list in 2022
(out of 12 in France in oncology)

3,300
students
trained

11,000
registered on
the teaching
platform

36
research
teams

40%
of patients followed are included
in clinical studies



PROVIDE
TOGETHER
a state-of-the-art medicine

○ ○ ○ ● ○

Gustave Roussy's teams innovate to offer high-quality, less invasive, earlier and more personalised care, with one objective: to optimise care pathways, to cure more and offer a better life after cancer. Gustave Roussy combines innovation and humanity, taking into account not only care but also physical, psychological and social quality of life.

The Institute is equipped with high-tech infrastructures: operating rooms, intensive care units, robotic surgery, cutting-edge outpatient surgery and interventional radiology platforms, completely revamped radiotherapy and imaging platforms, three chemotherapy preparation robots, a genomics platform...

With its Interception programme, Gustave Roussy offers personalised prevention for people identified as being at increased risk of cancer, in order to intercept the disease at an early stage.

300,000
medical consultations



14,000
day case procedures

3,700
patients treated with radiotherapy

17,000
inpatients

5,800
patients treated with chemotherapy

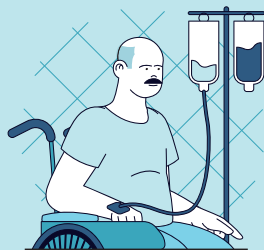
2,600
patients treated by interventional radiology

3,500
patients seen in pediatric consultations, including

475
new patients

215
patients treated with tomotherapy

4,400
patients treated surgically



WORKING
TOGETHER
for therapeutic progress

○ ○ ○ ● ○

Gustave Roussy brings together the best players in fundamental, clinical and exploratory research. Close collaboration between researchers and doctors means quicker access to the most advanced therapeutic innovations for patients.



With the launch of the Paris-Saclay Cancer Cluster, Gustave Roussy is part of an ecosystem that fosters excellence in multidisciplinary and collaborative research. The aim is to accelerate the provision of innovative treatments and improve cancer care.

The Prism programme awarded as *Institut hospitalo-universitaire*

Supported by a multi-partner consortium, Prism, the "national centre for precision medicine in the fight against cancer", becomes a university hospital institute.

64
researches
promoted by
Gustave Roussy
open to
inclusion



453
publications
in journals
with impact factor
greater than 10
(excluding
congresses)

10
Gustave Roussy experts among the
most cited in the world in the
Clarivate / Web of science list

437
patients included
in early trials
(phase I and I/II)

584
clinical trials open for inclusion,
87% of those are therapeutic trials **and** **59%** are promoted by an industry

SPREADING EXPERTISE
TOGETHER
to perform
○ ○ ○ ● ○

Education and training are deeply rooted in Gustave Roussy's culture, committed to transfer its experience to all professionals involved in cancer care: doctors, researchers, caregivers and students.

Through its teaching division, Gustave Roussy supports those involved in the fight against cancer and anticipates future revolutions in oncology. Attached to the Paris-Saclay University, Gustave Roussy Education trains professionals for tomorrow's oncology professions. Gustave Roussy is also home to the *École doctorale de cancérologie*, the only single-discipline doctoral school in oncology in France.



3,300
students trained



34
university
teachers

1
state diploma
in advanced
practices

3,600
hours devoted
to academic training



160,000
article downloads from
3 727 e-books **and** **452** journals

248
doctoral students
at the *École
doctorale
de cancérologie*

1
alumni network
100% dedicated
to oncology :
Gustave Roussy
Alumni

20
scientific
seminars and
master
classes

27
university
degrees



2
master
degrees

230
practicing teachers at
Gustave Roussy Education

and

250
external speakers

WORKING
TOGETHER
to accelerate success



**Individuals, associations, companies and major donors:
the generosity of all embodies the hope of curing cancer.**



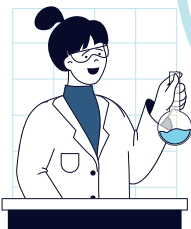
Gustave Roussy is a private, non-profit healthcare establishment with collective interest, authorized to receive donations, bequests and gifts, like its Foundation. They both have been awarded the "Don en confiance" label by the Comité de la Charte, to attest the transparency of fundraising procedures and the sound management of donations received.

16.8 M€
allocated for
fundamental
clinical research
projects

9 M€
granted
to strategic
investments

39 M€
in donations and bequests
collected by Gustave Roussy and
its Foundation in 2022 including

9.9 M€
raised through
bequests and gifts



A rigorous management:

14%
of fundraising costs



“

DOCTORS, CAREGIVERS, RESEARCHERS,
STUDENTS, DONORS...
THE UNION OF ALL ENERGIES
AND TALENTS IS OUR STRENGTH.
TOGETHER WE CAN CURE ADULT AND
CHILDHOOD CANCER IN THE 21ST CENTURY”



Pr. Fabrice Bartesi,
General Manager